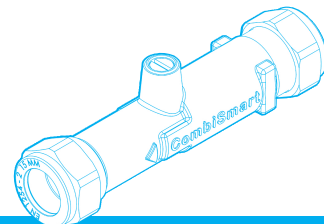


CombiSmart is the money and energy saving thermostatic valve for combination boilers. **To be fitted by a qualified Professional Installer.** Please read these instructions before fitting **CombiSmart**.



Before fitting **CombiSmart**

- Check there is a minimum of 110mm pipework accessible on the hot water outlet pipe from the combination boiler
- Check the boiler functions correctly as follows:

1. Minimum flow and pressure are correct
2. The boiler will pass the maximum flow rate +/- 10%

To check boiler compatibility and flow rates please go to combismart.co.uk/specifications

3. The boiler operates correctly at the minimum flow rate
4. Check the preheat or Eco/comfort mode can be turned off
5. Check there are no existing leaks on the pipework prior to fitting.

To install **CombiSmart** you will require (not supplied):

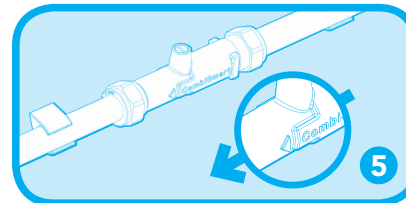
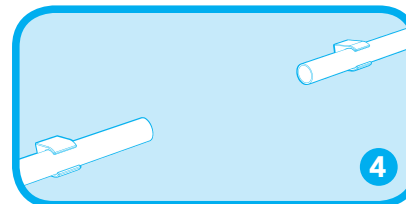
Tools

- Pipe cutter
- Spanners to fit the connectors
- Small flat screwdriver



How to install **CombiSmart**

- 1 Switch off the boiler and isolate from the electrical supply. Then turn off the cold water feed to the boiler.
- 2 Open all hot water taps in the system to drain away any standing water.
- 3 Identify a suitable position on the 15mm diameter domestic hot water outlet pipe from the boiler. Ideally this should be as close to the boiler as possible with access to fit and adjust the valve – within 750mm of the boiler.
CombiSmart will work in any orientation, both vertical and horizontal.
- 4 Your **CombiSmart** is fitted with a split coupling. Cut out 78mm from the pipe. Ensure the pipe is cut squarely and is free of burs.
- 5 Slide the **CombiSmart** (arrow end first) on to the pipe, ensuring the direction arrow points **AWAY** from the boiler. Slide the **CombiSmart** back on to the other pipe until it stops. Tighten the connectors, but do not over tighten. Close the hot taps and re-open the cold water supply to the boiler.



Getting started

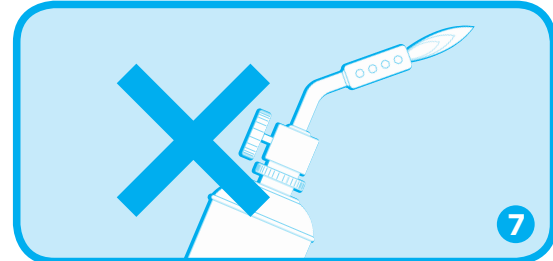
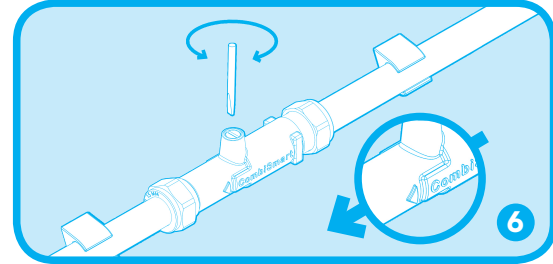
1. Turn on the cold supply to the boiler.
2. Check that no leaks are present at either end of the CombiSmart valve and the surrounding pipework.
3. Vent and close the hot taps.
4. Turn on the power to the boiler and ensure **the preheat or Eco/comfort mode is TURNED OFF**.
5. Fully turn on any hot tap (ideally closest to the boiler) and adjust the by-pass screw by slowly undoing the screw until the boiler fires. **Refer to note below to maintain boiler warranty.**
6. Water should flow slowly out of the tap at 3 litres per minute (if not, undo the screw until 3 litres per minute is obtained), until the valve reaches operating temperature and then full flow should be obtained.

Note: Once **CombiSmart** is fitted, ensure there is a minimum 3 litres per minute flow rate in order to maintain your boiler's warranty. With the boiler turned off, place a measuring jug under the hot tap for 10 seconds and turn on. The water will flow at a rate set by the by-pass screw. After 10 seconds, if the level in the measuring jug is 500ml, then this means the flow rate is set at 3 litres per minute. If there is less than 500ml, open the by-pass screw further, and re-measure. Once the by-pass flow rate has been set, switch on the boiler and check the hot water for correct operation. **If you live in a hard water area**, to avoid limescale build-up ensure boiler and domestic hot water temperatures are set below 65°C. This will also further reduce fuel bills. Under rare circumstances i.e. very low water pressure, slightly more than 3 litres per minute might be required to fire your boiler.

- 7 **DO NOT solder the pipe direct to the valve or with the valve in place.** This will damage the internal workings of the valve.

Trouble shooting (Visit www.combismart.co.uk/faqs)

1. **The boiler does not fire when another tap or toilet is running.** The by-pass rate is set too low. Adjust screw to increase flow.
2. **The water runs intermittently slow & fast/hot & cold.** The cold water flow through the boiler is set too high. Reduce the cold water flow to the boiler.



Guarantee

This product carries a 2 year guarantee.

The guarantee covers manufacturing or material defects only, when the product has been correctly installed, in accordance with our instructions. The extent of this liability is limited to a replacement product; it does not cover associated costs, such as installation or consequential loss. The guarantee is subject to a proof of purchase. This guarantee does not affect the statutory rights of the consumer.

For further advice visit www.combismart.co.uk

CombiSmart, 2 Midcroft, Ruislip, Middlesex HA4 8ES www.combismart.co.uk

Manufactured in Europe. Distributed by Save Water Save Money Ltd. Patent granted. Leave this installation guide with the property owner.

combismart

HOT WATER WITHOUT THE WASTE

05/2014 W/O CPLGS